



GEO

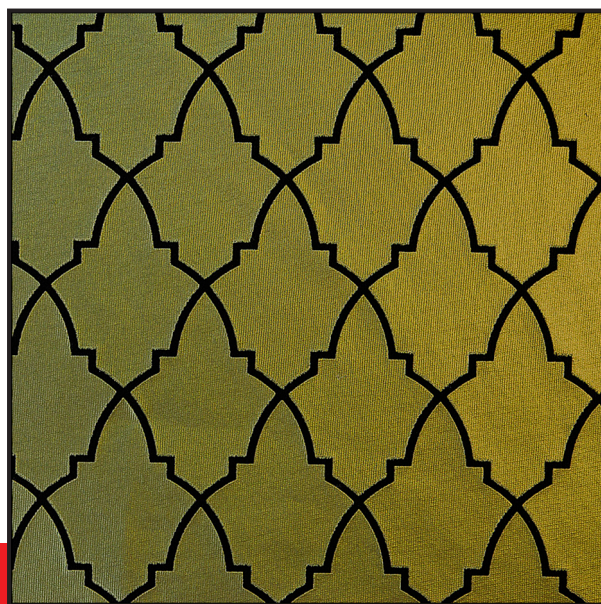


Printing Effect

Geo Aquapearl Lime and **Geo Galileus** is the right combination to get a very elastic and glossy under-base which enhances the color shifting effect of Aquapearl inks.

A proper control of the ink deposit is very important to obtain a perfect color-shifting.

GEO AQUAPEARL LIME



FOR COTTON

technical sheet

COLOUR 1 - RECIPE	RATIO	SCREEN	COLOUR 2 - RECIPE	RATIO	SCREEN
HYDRA WHITE 120 E	90	48/123	GEO GALILEUS	89	62/156
GEO GALILEUS	10	GEL 3	AQUATINT PIGMENT BLACK B	8	GEL 3
		STANDARD	UNIFIX LC	3	STANDARD
		SQUEEGEE			SQUEEGEE
		65-90-65			65-90-65
COLOUR 3 - RECIPE	RATIO	SCREEN	COLOUR 4 - RECIPE	RATIO	SCREEN
GEO GALILEUS	79	62/156	GEO AQUAPEARL LIME	97	48/123
AQUATINT PIGMENT BLACK B	8	GEL 3	UNIFIX LC	3	GEL 3
GEO AQUAPEARL LIME	10	STANDARD			STANDARD
UNIFIX LC	3	SQUEEGEE			SQUEEGEE
		65-90-65			60 SHORE

PRINTER PARAMETERS		PRINTING PROCEDURE		SUITABLE ADDITIVES
DRYER TEMPERATURE	160°C - 320°F	1	PRINT DOUBLE STROKE - FLASH	HYDRACRYL RETARDER: Retarder designed to further improve HYDRA, GEO and PERFETTO screen ink stability. Add 3-5% of HYDRACRYL RETARDER to the inks. Formaldehyde and phthalate free. UNIFIX LC: Additive specifically designed to ensure the proper resistance to frequent washings at high temperatures. up to 3-5% to be thoroughly mixed with the ink Phthalates and formaldehyde free Formaldehyde and phthalate free. HYDRA JET REDUCER: viscosity reducer; add 1-3% to the ink. In comparison to the other reducers, HYDRA JET REDUCER decreases viscosity especially when the ink is extremely thick. Formaldehyde and phthalate free. HYDRA REDUCER 120: To reduce viscosity, just add 3% of HYDRA REDUCER 120. Formaldehyde and phthalate free.
CURING TIME	2 MIN	2	PRINT DOUBLE STROKE - FLASH	
SQUEEGEE ANGLE	20°	3	PRINT DOUBLE STROKE - FLASH	
PRINTING SPEED	MEDIUM	4	PRINT DOUBLE STROKE - CURE	
SCREEN CLEAN UP				
USE WATER				
COMMENTS				

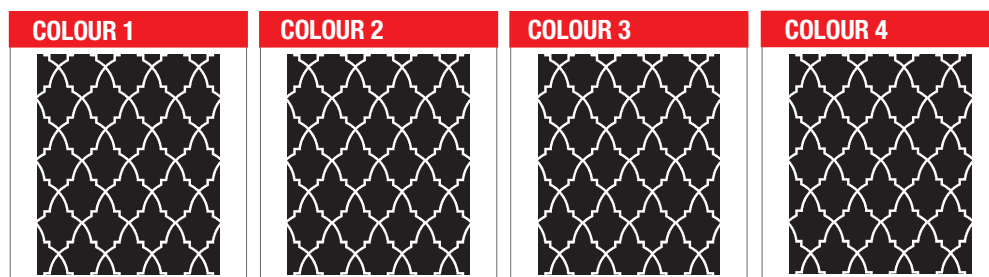
In case of severe durability test add 3% of Universal Fix in all the inks used.

Shelf Life: 12 months (shelf life of the product depends upon storage conditions).

Storage Conditions:

Store the products in a well ventilated and dry environment, temperature should be kept between 5-30°C .

Keep containers tightly sealed away from heat sources and direct sunlight.



GEO AQUAPEARL LIME - 02
JUNE 2018





GEO



Printing Effect

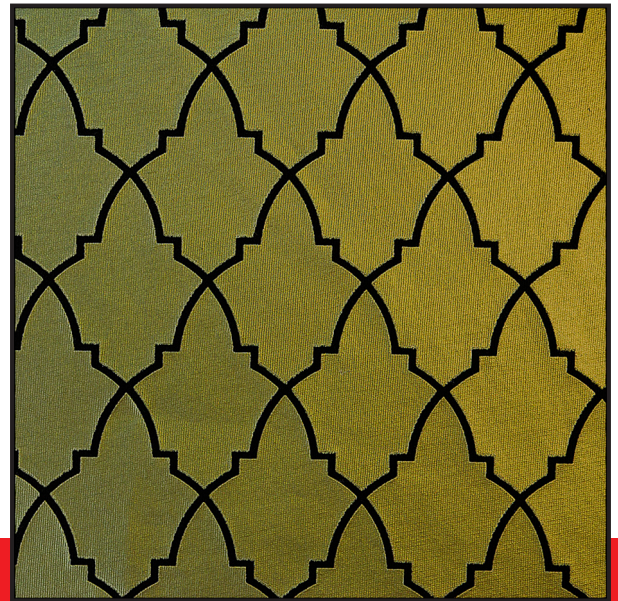
GEO AQUAPEARL LIME

Geo Aquapearl Lime and **Geo Galileus** is the right combination to get a very elastic and glossy under-base which enhances the color shifting effect of Aquapearl inks.

A proper control of the ink deposit is very important to obtain a perfect color-shifting.

In case of strong dye migration print a double layer of No-Sublimation Base.

FOR POLYESTER



technical sheet

COLOUR 1 - RECIPE	RATIO	SCREEN	COLOUR 2 - RECIPE	RATIO	SCREEN
NO SUBLIMATION BASE	97	48/123	GEO GALILEUS	89	62/156
HYDRACRYL RETARDER	3	GEL 3	AQUATINT PIGMENT BLACK B	8	GEL 3
		STANDARD	UNIFIX LC	3	STANDARD
		SQUEEGEE			SQUEEGEE
		65-90-65			65-90-65
COLOUR 3 - RECIPE	RATIO	SCREEN	COLOUR 4 - RECIPE	RATIO	SCREEN
GEO GALILEUS	79	62/156	GEO AQUAPEARL LIME	97	48/123
AQUATINT PIGMENT BLACK B	8	GEL 3	UNIFIX LC	3	GEL 3
GEO AQUAPEARL LIME	10	STANDARD			STANDARD
UNIFIX LC	3	SQUEEGEE			SQUEEGEE
		65-90-65			60 SHORE

PRINTER PARAMETERS		PRINTING PROCEDURE		SUITABLE ADDITIVES
DRYER TEMPERATURE	160°C - 320°F	1	PRINT DOUBLE STROKE - FLASH	HYDRACRYL RETARDER: Retarder designed to further improve HYDRA, GEO and PERFETTO screen ink stability. Add 3-5% of HYDRACRYL RETARDER to the inks. Formaldehyde and phthalate free. UNIFIX LC: Additive specifically designed to ensure the proper resistance to frequent washings at high temperatures. up to 3-5% to be thoroughly mixed with the ink Phthalates and formaldehyde free Formaldehyde and phthalate free. HYDRA JET REDUCER: viscosity reducer; add 1-3% to the ink. In comparison to the other reducers, HYDRA JET REDUCER decreases viscosity especially when the ink is extremely thick. Formaldehyde and phthalate free. HYDRA REDUCER 120: To reduce viscosity, just add 3% of HYDRA REDUCER 120. Formaldehyde and phthalate free.
CURING TIME	2 MIN	2	PRINT DOUBLE STROKE - FLASH	
SQUEEGEE ANGLE	20°	3	PRINT DOUBLE STROKE - FLASH	
PRINTING SPEED	MEDIUM	4	PRINT DOUBLE STROKE - CURE	
SCREEN CLEAN UP				
USE WATER				
COMMENTS				

In case of severe durability test add 3% of Universal Fix in all the inks used.
 Shelf Life: 12 months (shelf life of the product depends upon storage conditions).
Storage Conditions:
 Store the products in a well ventilated and dry environment, temperature should be kept between 5-30°C .
 Keep containers tightly sealed away from heat sources and direct sunlight.

